



Central Oklahoma Chapter
of the National Railway Historical Society
Oklahoma Railway Museum Ltd,

NARCOA Affiliate Member



Historic logos saved

by Gary Githens



photograph by Gary Githens

[l-r] Manhattan Bridge and Road Company project manager Mike Young and Superintendent Stewart Ronald

Story on page 5

Retro Metro OKC in action

by Gary Githens



photograph by Gary Githens

[l-r] Doug Loudenback, Dean Schirf, Justin Moore, Stan Hall and A.J. Kirkpatrick

Retro Metro OKC began scanning of photographs for the ORM on August 13th.

ORM obtains ballast

by Gary Githens



photograph by Gary Githens

Sherwood Construction Company loads ballast on ORM trucks.

Story on page 6

Retro Metro OKC & ORM-Bricktown exhibit

by Gary Githens



photograph by Gary Githens

Retro Metro OKC President Steve Lackmeyer points out the "old" Santa Fe station to ORM member Sam Mills.

Story on page 4

The President's Column



Thomas is almost here. We are spending most of our time preparing for this event. If you have not signed up for this and have some spare time please give us a call and we will find you a place.

We hosted the RetroMetro OKC historical group last night. They were instrumental in the Museum receiving the historical concrete plaques of the Rock Island and Frisco that were part of the Oklahoma City Robinson street overpass. Gary Githens, who headed up this effort, was interviewed for a video spot about these plaques so we will get some additional publicity from this effort. As an offshoot from this we were able to obtain about 400 truck loads of ballast for our railroad. Bob Hussey was the driving force on that part of the project.

We are also planning for the Halloween trains that will be run on October 30. The Dental Depot group is the Corporate sponsor on this event. It should be a fun

Stan Hall

Editors note: Watching the demolition of the Robinson Avenue bridge and logo removals generated some emotions for me because my great uncle Arnold Morgan was a carpenter on the project. I will continue to wonder if he worked on the logos. I do know he was proud of the structure as was my uncle Chester.

**Oklahoma Railway
Museum, Ltd.**

Board of Directors

Stan Hall, *President*
 Larry Dodd, *Vice President
and Program Chair*
 Drake Rice, *Secretary*
 Charles Price, *Treasurer*
 John Ansell, *NRHS Director*
 Bob Cossairt, *Director of
Buildings & Static Displays*
 Bob Hussey, *Director of
Track Maintenance*
 Jim Murray, *Director of
Mechanical Operations*
 Harry Currie, *Director at Large*
 Greg Hall, *Director of
Museum Activities*
 Kenneth Kozak, *Director of
Museum Displays*

Ed Birch Jr., *Train Show Chair*
 Gary Moore, *Membership
Chair*
 Gary Githens, *Dispatcher
Editor*

keep updated about the ORM on facebook.com

become a friend

2011 Board of Director Elections

Board Positions Open for Nominations

Vice President

Current position holder: Larry Dodd

Secretary

Current position holder: Drake Rice

Director of Mechanical Operations

Current position holder: Jim Murray

Director of Museum Displays

Current position holder: Kenneth Kozak

Director of Track Maintenance

Current position holder: Bob Hussey

Nominees will be published in the December and January issues of the Dispatcher.

Elections will be during the annual membership meeting January 8, 2011 beginning at 5:30 P.M. at the Home-town Buffet. More information next month.

The Oklahoma Railway Museum by-laws require elections for the positions listed at left in 2011. The position term is for 2 years.

Nominees Qualifications

ORM member for **6 months prior to Nov. 15th, 2010**

Nominations must be received on or before November 15th 2010.

Send nominations to:

Gary Moore, Membership Chairman

Mail: 1112 Providence Ct.

Edmond, OK 73003-6155

e-mail: gkrim@swbell.net

Museum Update by Drake Rice

The Day Out with Thomas Event is in full swing as you read this. A lot of volunteer work has been going on behind the scenes since March to bring this event about. Stan Hall, Harry Currie, Jim Murray, Jim Pasby, Greg Hall, Bob Cossairt, Charles Price, Gary Moore, Terry Birchett, Sam Mills, Truman Hefner and a couple of other's have been working to make sure things fall into place for the many visitors that come to the museum over the two weekends. They work to make sure when the volunteers show up to help, that things are in pretty good shape. A special thanks to Bob Hussey and his company for their support the week of the event, making sure the track is in good shape, getting Thomas off loaded and ready to go with final set up.

As for the event, we can always use volunteers at anytime, since there are cars to keep clean, things to take care of on the grounds and all the things that need to be tended to. If you can help in anyway, just for a few hours, please come out. We have planned on this event being the best yet and a great turn out. When you come to the museum you will need to check out the C&NW 7721 passenger car, formerly known as the "Blue Car". Mr. Kozak has been applying his magic and we believe everyone will be pleased. It will not be totally finished till after Thomas, but will be an improved look thanks to Jim Murray and Bob Nantois efforts. And there were other who also helped, whom we need to thank.

Over the weekend of September 18th, OKRX 2 was used for switching to get it broken in for museum operations in the future. With the addition of OKRX2, we now have four operational locomotives that are in use at the museum. Not bad, since at this time in 2001, we had no operating engines or even track on the museum grounds. Big thanks to the mechanical department that has labored hard over the last nine years. We thank all the guys and gals that have made this possible.

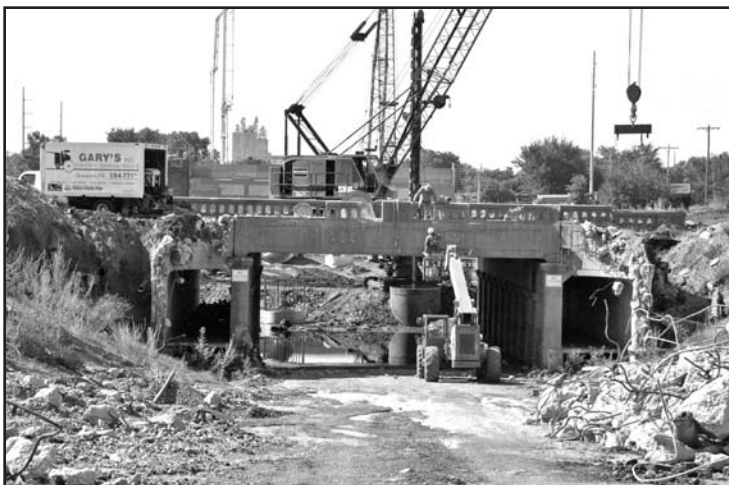
Following the Thomas Event, we will need to take things down and put them away and get ready for the next event, the Halloween Train that will roll on October 30th. So please plan to support your museum during the next weeks as we wind down another successful operating season.

Your museum continues to grow and the need for additional volunteer help grows with that need. If you can help a few hours a month, please let Stan Hall or Jim Murray know and they will be glad to visit with you to help find a place where you would like to help. Stop by the museum on Thursday, Friday or Saturday and visit. As always we appreciate our members which are now 178 strong.



**Oklahoma City Train Show
volunteers needed**

contact Bob Cook at: Bcookorm@cox.net



August 26, 2010 work underway removing the Rock Island logo.



August 26, 2010 one last photo of the Robinson Avenue bridge. About 2/3's of the bridge has been removed

Historic logos from Robinson Street bridge



Two passes were made to cut the beam. This is the second and largest blade with the guard about to be installed.



A couple of times the above hydraulic tools were used.



Logos being loaded on Bob Hussey Construction trailer for delivery to the Oklahoma Railway Museum.

photographs this page by Gary Githens



[[l-r] Mark England and Cody Bell with Gary's Concrete Cutting and Jesus Munez crane operator and Oscar Hernandez Skytrak operator with Manhattan Bridge and Road Company.



Hot dogs, trains & contractors

Employees of Sherwood Construction, Manhattan Road and Bridge, Gary's Concrete Cutting and I-40 ODOT team will be the guest of the ORM on October 16th for hot dogs and a train ride. This is our way of showing appreciation for their assistance during all the "goings on" mentioned on the opposite column.



Retro Metro OKC Bricktown Display and ORM Display

Retro Metro OKC has a space for displays in the Miller Jackson building at 115 E. California.

ORM member Sam Mills is heading the project. After meetings and photograph evaluations he has determined a model of the Katy passenger and freight depots which were located on Reno Avenue modeled in HO scale would best fit the display case available.



**visit the Oklahoma Railway Museum
at facebook.com become a friend**

Canopys, logos, guide rail, rail and ballast

by Gary Githens

My first visit to specifically see the logos to be saved was with Truman Hefner back on February 17th.

During that trip Truman pointed out the trolley power guide rail at the Walker Avenue bridge. That story was in the May 2010 issue of the Dispatcher.

The salvage of some sections of rail for Walker Avenue story was in the June 2010 issue of the Dispatcher.

August 25th through the 28th much needed ballast was hauled with the coopreation of Sherwood Construction.

The ORM participation with saving of historical items from the I-40 relocation project ended August 27th when the moving of the logos to the museum. Next, a suitable location and support foundations will be constructed.

Early during the Robinson Street demolition casting were made of the logos. This was accomplished in the event something "went wrong" during the removal and the logos were not savagable.

I want to say a special thanks to the construction team members that assisted with all the efforts:

- Korey Klover, Allen Contracting*
- Greg Waters, Sherwood Construction*
- Steve Thoendel, Sherwood Construction*
- Mike Young, Manhattan Road & Bridge*
- Stewart Ronald, Manhattan Road & Bridge*
- Taylor Henderson, ODOT Resident Engineer*
- Chuck Revelle, ODOT Transportation Tech*
- Gary's Concrete Cutting*
- Bob Hussey in charge of ballast hauling and the employees of the above contractors*

Previously, ORM members saved canopy from the Union Station and reinstalled it on our platform.

Robinson Street Bridge

by Dean Schirf

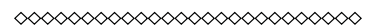
For almost 80 years , the Rock Island Herald has been proudly displayed on Oklahoma City's south Robinson Street railroad underpass, along with that of the Frisco Railroad.

The heralds date back to July 15, 1931 when Oklahoma City dedicated the opening of its Union Station. The Robinson Railroad Bridge was located approx a half mile east of the station and allowed both railroads to gain access to the station platforms and a network of a dozen tracks to accommodate their respective passenger and freight operations.

The last train to operate out of OKC's Union Station was Rock Island's Cherokee, primarily a Rail Post Office (RPO) Memphis-Little Rock-OKC- Amarillo-Tucumcari daily run along with a chair car in November, 1967. The Cherokee was a long time money maker for Rock Island due to the robust RPO business along its route....so much so that it was the second to last passenger train to be cut by the Rock Island outside its Chicago suburbia service. The Golden State Rocket was discontinued the following year.

The Robinson Street Bridge continued to be used by the freight operations of the BNSF (formerly Frisco) and Union Pacific (formerly Rock Island). Due to the present relocation/construction of Oklahoma City's I-40 Crosstown Expressway the Robinson Bridge is scheduled for demolition.

Thanks to the concerted efforts of a newly established local historical group, RetroMetroOKC, working in conjunction with the Oklahoma History Center and the Oklahoma Department of Transportation, these magnificent railroad heralds have now been saved and will be permanently and properly displayed at the Oklahoma Railway Museum in Oklahoma City.



Halloween Trains
Oct 30th
volunteer gouls needed

Ballast from I-40 project hauled to ORM

by Gary Githens

Our friends at Sherwood Construction allowed us to remove ballast from the removed UP track. The ORM arranged for and paid for the trucking.

The project was coordinated by Bob Hussey. Charles Price and Jim Pasby were on hand at the ORM unload locations to sign delivery tickets.

A total of 410 loads were hauled beginning on August 25th and ending on August 28th. Estimated weight hauled is 5,330 tons.

The next step in the process will be the placement of ballast, regulating and tamping.



Across a field of ballast at Owanda siding a truck prepares to dump another load

photographs this page by Raymond Woods

• • • • •

Logo castings

Early this year ODOT asked Manhattan Road and Bridge Construction to determine a method and make casting of the Rock Island and Frisco logos.



The castings were made on the south approach to take no chance damaging the north casting which were to be preserved.

On September 3rd, Jim Pasby, Lawrence Kelly, Joe Nantois, Charles Price and Gary Githens picked up the castings at the ODOT I-40 project office and brought them to the museum. Korey Klover with Allen Contracting assisted with the loading.

ORM members to take training visit to Plains Indians & Pioneers Museum

by Gary Githens

Stan Hall, Chuck Shinn, Anne Murray and Gary Githens will be visiting the Plains Indian and Pioneers Museum at Woodward October 22nd.

Museum director Robert Roberson will give us insight into how they have setup and use PastPerfect museum software. The same software is being used by the ORM to record our collections. This software is also used for membership records.

You should visit: pipm1.org to view how they use the software for recording and viewing their collections. On the title bar select "collections." Then select "click here" in "to view and search our online collections. click here." Enter "Santa Fe" and all pictures with Santa Fe in the description will display.

The ORM has an extensive collection of structure blue prints, photographs and other documents. Scanning for preservation purposes and viewing is underway.

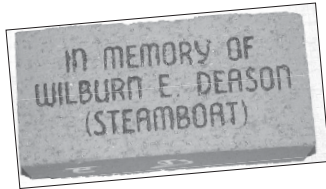
We have a tremendous collection and we must get it organized and available for viewing.



ORM Depot Store

The Oklahoma Railway Museum, Ltd. (ORM) has items available for both children and adults at the Depot Store. These include baseball caps, polo shirts, t-shirts, lapel pins, and coasters. Funds raised by donations for these items support the Museum projects.

The Depot Store, located inside the Oakwood Depot on the Museum grounds, is open during regular **Museum hours – 9 am to 4 pm on the first and third Saturday operation days** of each month April through October. The store is also open for special events.



Order Form – Engraved Platform Bricks

Cost is \$50.00 per brick.
Up to a maximum of 4 lines with 16 letters and spaces per line

Purchaser's Name _____ Phone No. (____) _____

Line 1																
Line 2																
Line 3																
Line 4																

Become an ORM Member

2010 MEMBERSHIP APPLICATION:

- \$30.00 per year – Individual Membership in the Oklahoma Railway Museum, Ltd. (spouse included)
- \$25.00 per year – Individual Senior (age 65 and up) (spouse included) and Individual Student (full-time student) Membership in ORM
- \$36.00 per year – To add Railway Historical Society (NRHS) Membership (add \$5.00 for spouse) (Student Memberships: \$16 per year)
- \$500.00 - Lifetime Membership

SEND NRHS DUES TO ORM ADDRESS BELOW, NOT DIRECTLY TO NRHS

Send your application and dues to: **Oklahoma Railway Museum , Ltd.
3400 NE Grand Boulevard
Oklahoma City, Oklahoma 73111**

Name _____

Address _____

City _____

Phone _____ Fax _____ Cell Phone _____

E-Mail _____

Engraved Platform Bricks

More than one platform brick can be donated to the Museum and you can make copies of the attached form. Mail completed forms with checks or money orders to: Jim Murray, ORM, 3400 NE Grand Boulevard, Oklahoma City, Oklahoma 73111. If you have any questions, you can e-mail Murray at:
jtmurray@cox.net.

Crosstie Donations

Friends and families of ORM continue to make donations for crossties, equipment and facilities on the Museum property and on the leased track.

If you want to make a donation to purchase a crosstie, a donation of \$42.50 will help purchase a new crosstie. You can donate a crosstie in recognition or in memory of someone. All donations should be made out to the Oklahoma Railway Museum Ltd.

Please note on the check what the donation is for, mail to: ORM Ltd., 3400 NE Grand Boulevard, Oklahoma City, 73111

**Halloween Trains
Oct 30th
Oklahoma City Train Show
December 4 & 5**



Oklahoma Railway Museum, Ltd.
 3400 NE Grand Boulevard
 Oklahoma City, OK 73111

NONPROFIT ORG.
 U.S. Postage
 PAID
 Permit No. 1323
 Oklahoma City, OK

H a l l o w e e n Trains
 Oct 30th
 Oklahoma City Train Show
 December 4 & 5

RETURN SERVICE REQUESTED



photograph by Gary Githens

Above L-R Jim Pasby, Bob Cossairt look on as Charles Price installs a new plexiglass guard for the model railroad.

ORM model railroad project

The ORM model railroad layout is made possible because of donations from Don Schiesz, Marvin Woodworth, Bob Hussey and COMRAIL model club.

Bob Nantois has been doing the scenery and project manager Jim Pasby has been doing track work, controls and any job needed. Carpentry and other assistance has been provided by Bob Cossairt and Charles Price.

The ORM would like to thank all that donated layouts and equipment as well as the volunteers who are working on the project to have it operational for DOWT.



photograph by Jim Pasby

Above, Bob Nantois works on scenery for the model railroad. Bob has been responsible for scenery installation.